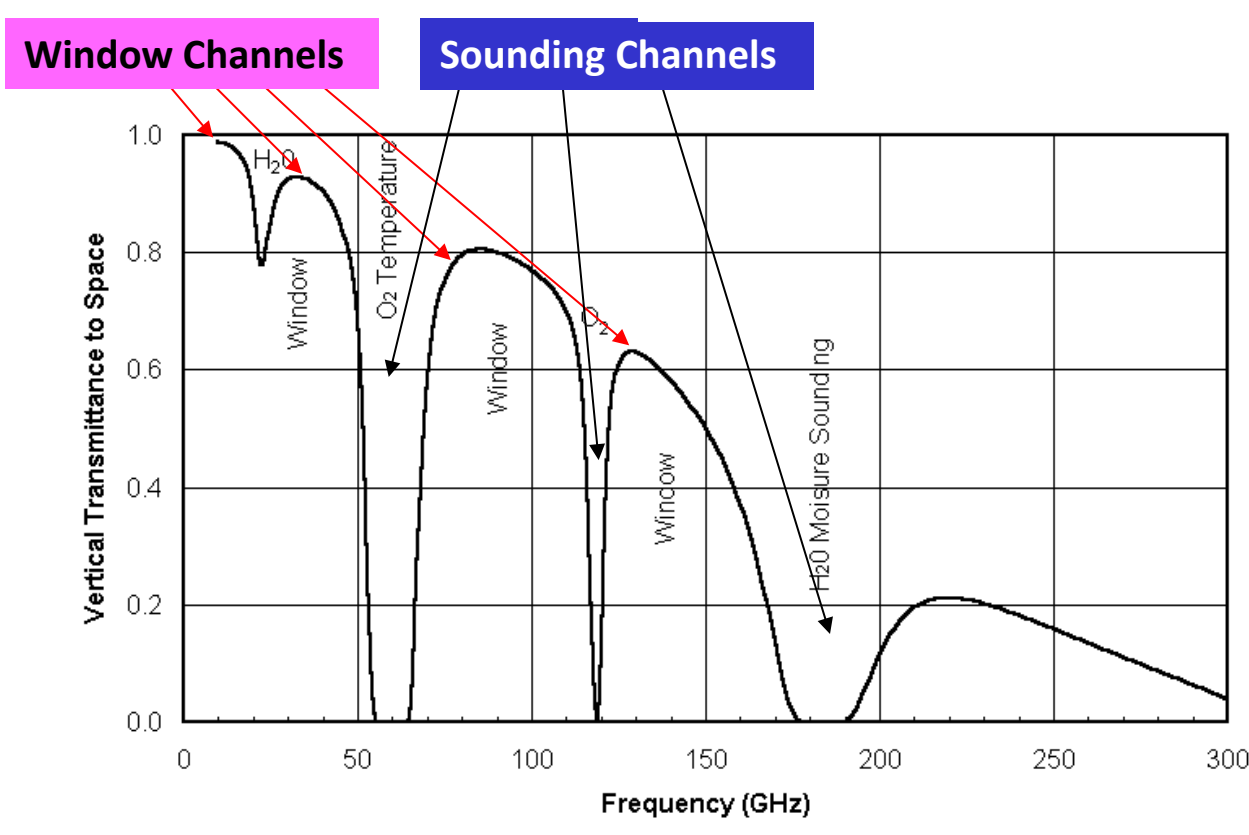


Intercomparison of RTTOV and CRTM: Simulated radiances of AMSU-A and microwave scattering solver

Ju-Hye Kim, Jeon-Ho Kang, Sihye Lee, Hataek Kwon, and Jihye Kwon

Korea Institute of Atmospheric Prediction Systems, Seoul, Korea / j.kim@kiaps.org

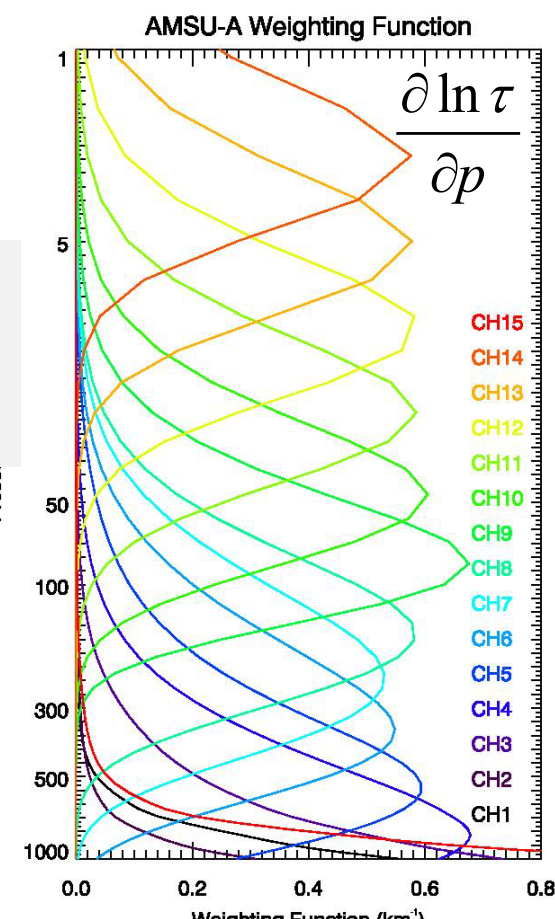
1. Introduction



Passive microwave sensors

- **Sounder** : AMSU-A/B, FY-3, SSMIS, ATMS
- **Imager** : SSMIS, TMI, AMSR-2, GMI

AMSU-A has 15 channels, 12 temperature sounding channels around the O2 absorption band (50~60 GHz) and 3 image channels at 23.8, 31.4, and 89 GHz. It is cross-track scanning radiometer, which has an instantaneous field of view (IFOV) of 50 km at nadir and the swath width of 2300 km.



2. RTTOV and CRTM

	Clear	Cloudy	Clear+Cloudy
	RTTOV (v10.2)	RTTOV_SCATT (microwave)	CRTM (common interface) v2.1.1
Input variables	<ul style="list-style-type: none"> Layer : p,q,t 2m : t,p,q,u,v Skin : t, salinity, sfc type, elevation Geometry : satellite zenith angle, sun zenith angle, latitude $TB_{allsky} = TB_{cloud} \times cldfrac + TB_{clr} \times (1 - cldfrac)$	<ul style="list-style-type: none"> Level : p Layer : Mixing ratio (clw, ciw, rain, snow), cloud cover 	<ul style="list-style-type: none"> Layer : p, q, t, water content and hail effective radius of hydrometeors (clw, ciw, rw, snow, graupel, hail) Level : p 10m : wind Skin : t, salinity, sfc type, elevation Geometry : satellite zenith angle, sun zenith angle, viewing angle
Scattering solver	Two-stream Eddington approximation model (Bauer et al. 2006)		Advanced doubling-adding (ADA) method (Liu and Weng 2006)

3. Results for surface emissivity

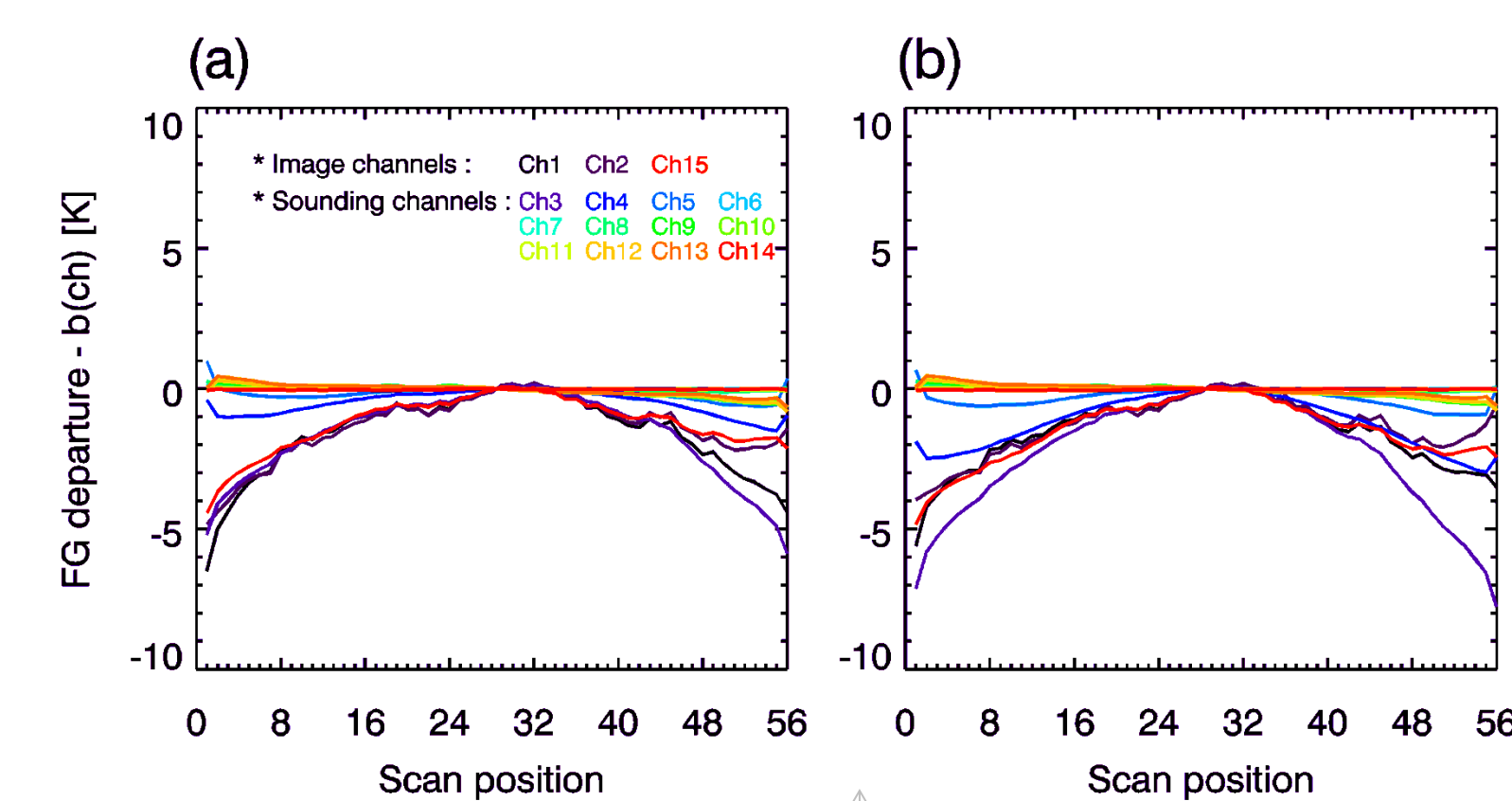
✓ One day's observations from NOAA-15, 18, 19 and MetOp-A are used.

For Ocean

1) Comparing OmB for FASTEM

CH	RTTOV				CRTM			
	Mean(O-B)	STD(O-B)	Mean(O-B)	STD(O-B)	Mean(O-B)	STD(O-B)	Mean(O-B)	STD(O-B)
	V4	V5	V4	V5	V4	V5	V4	V5
1	6.0	5.5	13.22	13.22	7.8	7.7	12.99	12.98
2	9.4	8.6	14.10	14.14	9.9	9.4	14.1	14.13
3	5.5	4.5	6.05	5.96	7.0	6.3	6.3	6.14
4	0.5	0.3	1.38	1.38	1.0	0.9	1.67	1.58
5	-0.1	-0.1	0.57	0.58	0.0	0.0	0.62	0.61
6	-0.8	-0.8	0.38	0.38	-0.7	-0.7	0.37	0.37
7	-0.6	-0.6	0.53	0.53	-0.6	-0.6	0.51	0.51
8	-0.6	-0.6	0.49	0.49	-0.5	-0.5	0.47	0.47
9	-1.0	-1.0	0.52	0.52	-1.0	-1.0	0.49	0.49
10	-1.1	-1.1	0.46	0.46	-1.0	-1.0	0.45	0.45
11	-1.3	-1.3	0.50	0.50	-1.3	-1.3	0.50	0.50
12	-1.2	-1.2	0.54	0.54	-1.2	-1.2	0.55	0.55
13	-0.9	-0.9	0.81	0.81	-1.0	-1.0	0.88	0.88
14	-0.4	-0.4	1.92	1.92	-0.5	-0.5	2.11	2.11
15	8.3	6.4	8.96	8.71	9.1	7.4	9.29	8.94

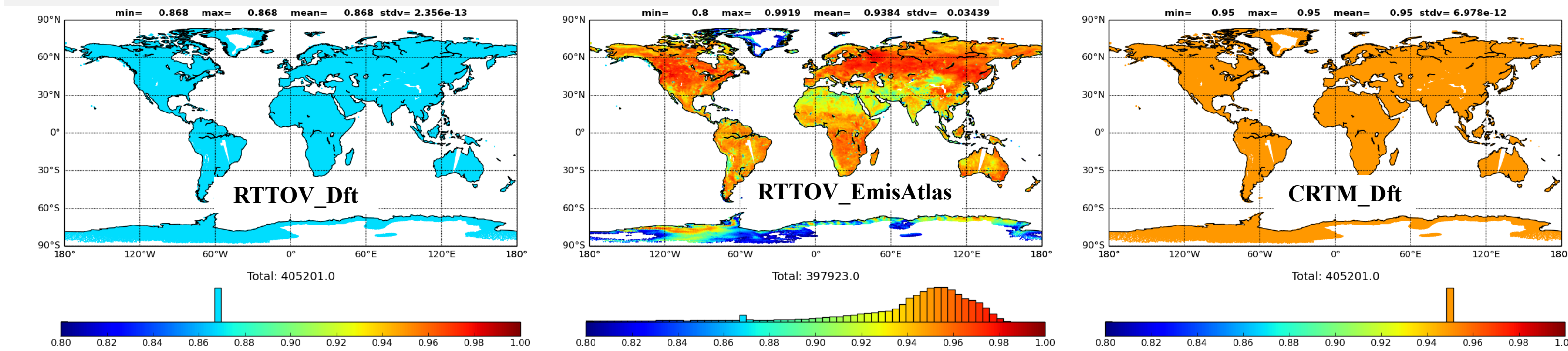
2) Comparing OmB for scan positions



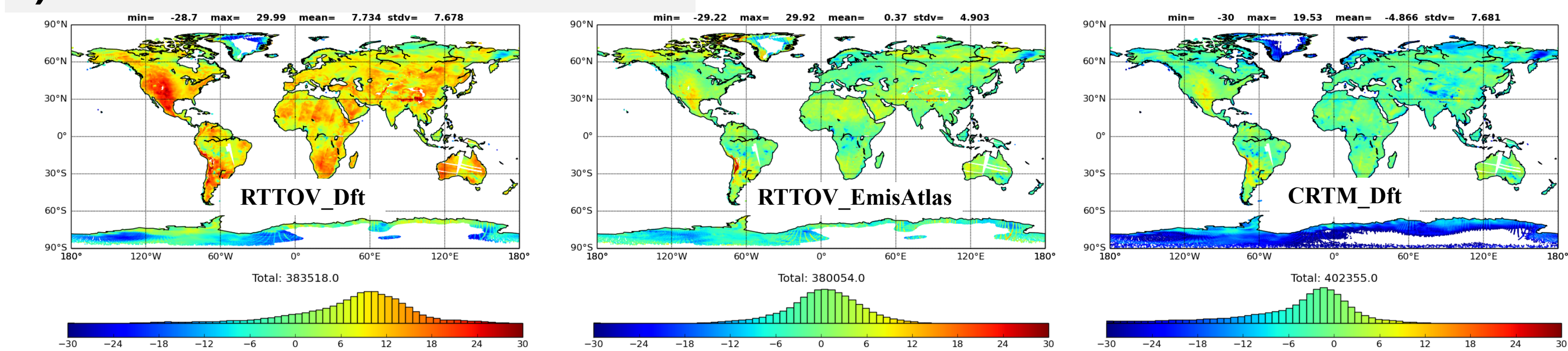
- The correction of FG departures according to the scan position is done by removing the values (b_{ch}) between observed and simulated TBs of mid-point of beam positions on each channel.
- For FASTEM version, there are no differences in OmB of channel 6 to 14 in both models.
- Differences are relatively large on channel 2, 3, and 15.
- On channel 1-5 and 15, OmBs from RTTOV is smaller than those from CRTM.

For Land

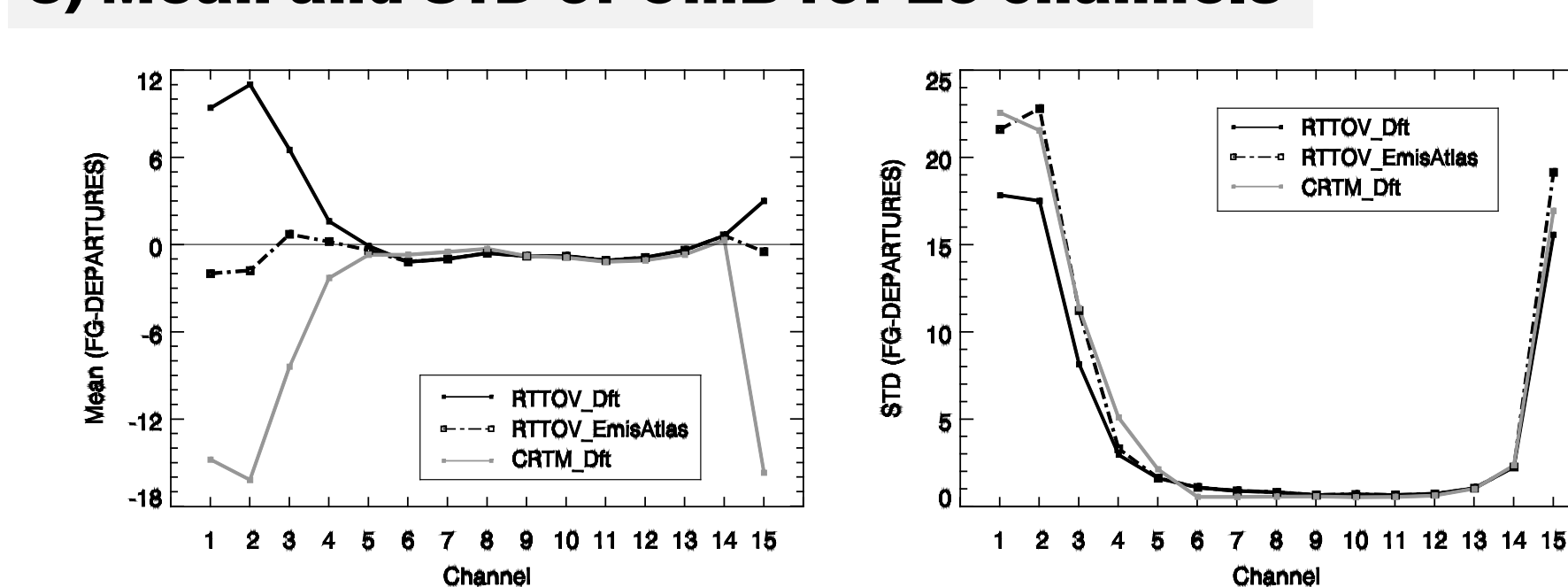
1) Surface emissivity of AMSU-A Ch02 (satellite zenith angle = 15°)



2) Distribution of OmB of AMSU-A Ch03



3) Mean and STD of OmB for 15 channels



For Sea-ice

	RTTOV	CRTM
Surface emissivity	<pre> if (rttov_prof # skin # surface) then rttov_prof[skin] = 0.87 rttov_prof[skin+1] = 0.96 rttov_prof[skin+2] = 0.96 rttov_prof[skin+3] = 0.96 rttov_prof[skin+4] = 0.96 rttov_prof[skin+5] = 0.96 rttov_prof[skin+6] = 0.96 rttov_prof[skin+7] = 0.96 rttov_prof[skin+8] = 0.96 rttov_prof[skin+9] = 0.96 rttov_prof[skin+10] = 0.96 rttov_prof[skin+11] = 0.96 rttov_prof[skin+12] = 0.96 rttov_prof[skin+13] = 0.96 rttov_prof[skin+14] = 0.96 rttov_prof[skin+15] = 0.96 end </pre>	DEFAULT_EMISSIVITY = 0.92_fp

Additional inputs for EmisAtlas in RTTOV are informations for that month, latitude, and longitude. How about CRTM?

```

! Compute the surface physical parameters
IF (CSCensorType) == Frequency(ChannelIndex) < FREQUENCY_CUTOFF) THEN
  ! Frequency is too small for the model
  DO 10 I = 1, SfcPhysParams
    SfcPhysParams(I) = 0.0
  END DO
  ! Compute the surface physical parameters
  SfcPhysParams(1) = SfcPhysParams(1)
  SfcPhysParams(2) = SfcPhysParams(2)
  SfcPhysParams(3) = SfcPhysParams(3)
  SfcPhysParams(4) = SfcPhysParams(4)
  SfcPhysParams(5) = SfcPhysParams(5)
  SfcPhysParams(6) = SfcPhysParams(6)
  SfcPhysParams(7) = SfcPhysParams(7)
  SfcPhysParams(8) = SfcPhysParams(8)
  SfcPhysParams(9) = SfcPhysParams(9)
  SfcPhysParams(10) = SfcPhysParams(10)
  SfcPhysParams(11) = SfcPhysParams(11)
  SfcPhysParams(12) = SfcPhysParams(12)
  SfcPhysParams(13) = SfcPhysParams(13)
  SfcPhysParams(14) = SfcPhysParams(14)
  SfcPhysParams(15) = SfcPhysParams(15)
  SfcPhysParams(16) = SfcPhysParams(16)
  SfcPhysParams(17) = SfcPhysParams(17)
  SfcPhysParams(18) = SfcPhysParams(18)
  SfcPhysParams(19) = SfcPhysParams(19)
  SfcPhysParams(20) = SfcPhysParams(20)
  SfcPhysParams(21) = SfcPhysParams(21)
  SfcPhysParams(22) = SfcPhysParams(22)
  SfcPhysParams(23) = SfcPhysParams(23)
  SfcPhysParams(24) = SfcPhysParams(24)
  SfcPhysParams(25) = SfcPhysParams(25)
  SfcPhysParams(26) = SfcPhysParams(26)
  SfcPhysParams(27) = SfcPhysParams(27)
  SfcPhysParams(28) = SfcPhysParams(28)
  SfcPhysParams(29) = SfcPhysParams(29)
  SfcPhysParams(30) = SfcPhysParams(30)
  SfcPhysParams(31) = SfcPhysParams(31)
  SfcPhysParams(32) = SfcPhysParams(32)
  SfcPhysParams(33) = SfcPhysParams(33)
  SfcPhysParams(34) = SfcPhysParams(34)
  SfcPhysParams(35) = SfcPhysParams(35)
  SfcPhysParams(36) = SfcPhysParams(36)
  SfcPhysParams(37) = SfcPhysParams(37)
  SfcPhysParams(38) = SfcPhysParams(38)
  SfcPhysParams(39) = SfcPhysParams(39)
  SfcPhysParams(40) = SfcPhysParams(40)
  SfcPhysParams(41) = SfcPhysParams(41)
  SfcPhysParams(42) = SfcPhysParams(42)
  SfcPhysParams(43) = SfcPhysParams(43)
  SfcPhysParams(44) = SfcPhysParams(44)
  SfcPhysParams(45) = SfcPhysParams(45)
  SfcPhysParams(46) = SfcPhysParams(46)
  SfcPhysParams(47) = SfcPhysParams(47)
  SfcPhysParams(48) = SfcPhysParams(48)
  SfcPhysParams(49) = SfcPhysParams(49)
  SfcPhysParams(50) = SfcPhysParams(50)
  SfcPhysParams(51) = SfcPhysParams(51)
  SfcPhysParams(52) = SfcPhysParams(52)
  SfcPhysParams(53) = SfcPhysParams(53)
  SfcPhysParams(54) = SfcPhysParams(54)
  SfcPhysParams(55) = SfcPhysParams(55)
  SfcPhysParams(56) = SfcPhysParams(56)
  SfcPhysParams(57) = SfcPhysParams(57)
  SfcPhysParams(58) = SfcPhysParams(58)
  SfcPhysParams(59) = SfcPhysParams(59)
  SfcPhysParams(60) = SfcPhysParams(60)
  SfcPhysParams(61) = SfcPhysParams(61)
  SfcPhysParams(62) = SfcPhysParams(62)
  SfcPhysParams(63) = SfcPhysParams(63)
  SfcPhysParams(64) = SfcPhysParams(64)
  SfcPhysParams(65) = SfcPhysParams(65)
  SfcPhysParams(66) = SfcPhysParams(66)
  SfcPhysParams(67) = SfcPhysParams(67)
  SfcPhysParams(68) = SfcPhysParams(68)
  SfcPhysParams(69) = SfcPhysParams(69)
  SfcPhysParams(70) = SfcPhysParams(70)
  SfcPhysParams(71) = SfcPhysParams(71)
  SfcPhysParams(72) = SfcPhysParams(72)
  SfcPhysParams(73) = SfcPhysParams(73)
  SfcPhysParams(74) = SfcPhysParams(74)
  SfcPhysParams(75) = SfcPhysParams(75)
  SfcPhysParams(76) = SfcPhysParams(76)
  SfcPhysParams(77) = SfcPhysParams(77)
  SfcPhysParams(78) = SfcPhysParams(78)
  SfcPhysParams(79) = SfcPhysParams(79)
  SfcPhysParams(80) = SfcPhysParams(80)
  SfcPhysParams(81) = SfcPhysParams(81)
  SfcPhysParams(82) = SfcPhysParams(82)
  SfcPhysParams(83) = SfcPhysParams(83)
  SfcPhysParams(84) = SfcPhysParams(84)
  SfcPhysParams(85) = SfcPhysParams(85)
  SfcPhysParams(86) = SfcPhysParams(86)
  SfcPhysParams(87) = SfcPhysParams(87)
  SfcPhysParams(88) = SfcPhysParams(88)
  SfcPhysParams(89) = SfcPhysParams(89)
  SfcPhysParams(90) = SfcPhysParams(90)
  SfcPhysParams(91) = SfcPhysParams(91)
  SfcPhysParams(92) = SfcPhysParams(92)
  SfcPhysParams(93) = SfcPhysParams(93)
  SfcPhysParams(94) = SfcPhysParams(94)
  SfcPhysParams(95) = SfcPhysParams(95)
  SfcPhysParams(96) = SfcPhysParams(96)
  SfcPhysParams(97) = SfcPhysParams(97)
  SfcPhysParams(98) = SfcPhysParams(98)
  SfcPhysParams(99) = SfcPhysParams(99)
  SfcPhysParams(100) = SfcPhysParams(100)
  SfcPhysParams(101) = SfcPhysParams(101)
  SfcPhysParams(102) = SfcPhysParams(102)
  SfcPhysParams(103) = SfcPhysParams(103)
  SfcPhysParams(104) = SfcPhysParams(104)
  SfcPhysParams(105) = SfcPhysParams(105)
  SfcPhysParams(106) = SfcPhysParams(106)
  SfcPhysParams(107) = SfcPhysParams(107)
  SfcPhysParams(108) = SfcPhysParams(108)
  SfcPhysParams(109) = SfcPhysParams(109)
  SfcPhysParams(110) = SfcPhysParams(110)
  SfcPhysParams(111) = SfcPhysParams(111)
  SfcPhysParams(112) = SfcPhysParams(112)
  SfcPhysParams(113) = SfcPhysParams(113)
  SfcPhysParams(114) = SfcPhysParams(114)
  SfcPhysParams(115) = SfcPhysParams(115)
  SfcPhysParams(116) = SfcPhysParams(116)
  SfcPhysParams(117) = SfcPhysParams(117)
  SfcPhysParams(118) = SfcPhysParams(118)
  SfcPhysParams(119) = SfcPhysParams(119)
  SfcPhysParams(120) = SfcPhysParams(120)
  SfcPhysParams(121) = SfcPhysParams(121)
  SfcPhysParams(122) = SfcPhysParams(122)
  SfcPhysParams(123) = SfcPhysParams(123)
  SfcPhysParams(124) = SfcPhysParams(124)
  SfcPhysParams(125) = SfcPhysParams(125)
  SfcPhysParams(126) = SfcPhysParams(126)
  SfcPhysParams(127) = SfcPhysParams(127)
  SfcPhysParams(128) = SfcPhysParams(128)
  SfcPhysParams(129) = SfcPhysParams(129)
  SfcPhysParams(130) = SfcPhysParams(130)
  SfcPhysParams(131) = SfcPhysParams(131)
  SfcPhysParams(132) = SfcPhysParams(132)
  SfcPhysParams(133) = SfcPhysParams(133)
  SfcPhysParams(134) = SfcPhysParams(134)
  SfcPhysParams(135) = SfcPhysParams(135)
  SfcPhysParams(136) = SfcPhysParams(136)
  SfcPhysParams(137) = SfcPhysParams(137)
  SfcPhysParams(138) = SfcPhysParams(138)
  SfcPhysParams(139) = SfcPhysParams(139)
  SfcPhysParams(140) = SfcPhysParams(140)
  SfcPhysParams(141) = SfcPhysParams(141)
  SfcPhysParams(142) = SfcPhysParams(142)
  SfcPhysParams(143) = SfcPhysParams(143)
  SfcPhysParams(144) = SfcPhysParams(144)
  SfcPhysParams(145) = SfcPhysParams(145)
  SfcPhysParams(146) = SfcPhysParams(146)
  SfcPhysParams(147) = SfcPhysParams(147)
  SfcPhysParams(148) = SfcPhysParams(148)
  SfcPhysParams(149) = SfcPhysParams(149)
  SfcPhysParams(150) = SfcPhysParams(150)
  SfcPhysParams(151) = SfcPhysParams(151)
  SfcPhysParams(152) = SfcPhysParams(152)
  SfcPhysParams(153) = SfcPhysParams(153)
  SfcPhysParams(154) = SfcPhysParams(154)
  SfcPhysParams(155) = SfcPhysParams(155)
  SfcPhysParams(156) = SfcPhysParams(156)
  SfcPhysParams(157) = SfcPhysParams(157)
  SfcPhysParams(158) = SfcPhysParams(158)
  SfcPhysParams(159) = SfcPhysParams(159)
  SfcPhysParams(160) = SfcPhysParams(160)
  SfcPhysParams(161) = SfcPhysParams(161)
  SfcPhysParams(162) = SfcPhysParams(162)
  SfcPhysParams(163) = SfcPhysParams(163)
  SfcPhysParams(164) = SfcPhysParams(164)
  SfcPhysParams(165) = SfcPhysParams(165)
  SfcPhysParams(166) = SfcPhysParams(166)
  SfcPhysParams(167) = SfcPhysParams(167)
  SfcPhysParams(168) = SfcPhysParams(168)
  SfcPhysParams(169) = SfcPhysParams(169)
  SfcPhysParams(170) = SfcPhysParams(170)
  SfcPhysParams(171) = SfcPhysParams(171)
  SfcPhysParams(172) = SfcPhysParams(172)
  SfcPhysParams(173) = SfcPhysParams(173)
  SfcPhysParams(174) = SfcPhysParams(174)
  SfcPhysParams(175) = SfcPhysParams(175)
  SfcPhysParams(176) = SfcPhysParams(176)
  SfcPhysParams(177) = SfcPhysParams(177)
  SfcPhysParams(178) = SfcPhysParams(178)
  SfcPhysParams(179) = SfcPhysParams(179)
  SfcPhysParams(180) = SfcPhysParams(180)
  SfcPhysParams(181) = SfcPhysParams(181)
  SfcPhysParams(182) = SfcPhysParams(182)
  SfcPhysParams(183) = SfcPhysParams(183)
  SfcPhysParams(184) = SfcPhysParams(184)
  SfcPhysParams(185) = SfcPhysParams(185)
  SfcPhysParams(186) = SfcPhysParams(186)
  SfcPhysParams(187) = SfcPhysParams(187)
  SfcPhysParams(188) = SfcPhysParams(188)
  SfcPhysParams(189) = SfcPhysParams(189)
  SfcPhysParams(190) = SfcPhysParams(190)
  SfcPhysParams(191) = SfcPhysParams(191)
  SfcPhysParams(192) = SfcPhysParams(192)
  SfcPhysParams(193) = SfcPhysParams(193)
  SfcPhysParams(194) = SfcPhysParams(194)
  SfcPhysParams(195) = SfcPhysParams(195)
  SfcPhysParams(196) = SfcPhysParams(196)
  SfcPhysParams(197) = SfcPhysParams(197)
  SfcPhysParams(198) = SfcPhysParams(198)
  SfcPhysParams(199) = SfcPhysParams(199)
  SfcPhysParams(200) = SfcPhysParams(200)
  SfcPhysParams(201) = SfcPhysParams(201)
  SfcPhysParams(202) = SfcPhysParams(202)
  SfcPhysParams(203) = SfcPhysParams(203)
  SfcPhysParams(204) = SfcPhysParams(204)
  SfcPhysParams(205) = SfcPhysParams(205)
  SfcPhysParams(206) = SfcPhysParams(206)
  SfcPhysParams(207) = SfcPhysParams(207)
  SfcPhysParams(208) = SfcPhysParams(208)
  SfcPhysParams(209) = SfcPhysParams(209)
  SfcPhysParams(210) = SfcPhysParams(210)
  SfcPhysParams(211) = SfcPhysParams(211)
  SfcPhysParams(212) = SfcPhysParams(212)
  SfcPhysParams(213) = SfcPhysParams(213)
  SfcPhysParams(214) = SfcPhysParams(214)
  SfcPhysParams(215) = SfcPhysParams(215)
  SfcPhysParams(216) = SfcPhysParams(216)
  SfcPhysParams(217) = SfcPhysParams(217)
  SfcPhysParams(218) = SfcPhysParams(218)
  SfcPhysParams(219) = SfcPhysParams(219)
  SfcPhysParams(220) = SfcPhysParams(220)
  SfcPhysParams(221) = SfcPhysParams(221)
  SfcPhysParams(222) = SfcPhysParams(222)
  SfcPhysParams(223) = SfcPhysParams(223)
  SfcPhysParams(224) = SfcPhysParams(224)
  SfcPhysParams(225) = SfcPhysParams(225)
  SfcPhysParams(226) = SfcPhysParams(226)
  SfcPhysParams(227) = SfcPhysParams(227)
  SfcPhysParams(228) = SfcPhysParams(228)
  SfcPhysParams(229) = SfcPhysParams(229)
  SfcPhysParams(230) = SfcPhysParams(230)
  SfcPhysParams(231) = SfcPhysParams(231)
  SfcPhysParams(232) = SfcPhysParams(232)
  SfcPhysParams(233) = SfcPhysParams(233)
  SfcPhysParams(234) = SfcPhysParams(234)
  SfcPhysParams(235) = SfcPhysParams(235)
  SfcPhysParams(236) = SfcPhysParams(236)
  SfcPhysParams(237) = SfcPhysParams(237)
  SfcPhysParams(238) = SfcPhysParams(238)
  SfcPhysParams(239) = SfcPhysParams(239)
  SfcPhysParams(240) = SfcPhysParams(240)
  SfcPhysParams(241) = SfcPhysParams(241)
  SfcPhysParams(242) = SfcPhysParams(242)
  SfcPhysParams(243) = SfcPhysParams(243)
  SfcPhysParams(244) = SfcPhysParams(244)
  SfcPhysParams(245) = SfcPhysParams(245)
  SfcPhysParams(246) = SfcPhysParams(246)
  SfcPhysParams(247) = SfcPhysParams(247)
  SfcPhysParams(248) = SfcPhysParams(248)
  SfcPhysParams(249) = SfcPhysParams(249)
  SfcPhysParams(250) = SfcPhysParams(250)
  SfcPhysParams(251) = SfcPhysParams(251)
  SfcPhysParams(252) = SfcPhysParams(252)
  SfcPhysParams(253) = SfcPhysParams(253)
  SfcPhysParams(254) = SfcPhysParams(254)
  SfcPhysParams(255) = SfcPhysParams(255)
  SfcPhysParams(256) = SfcPhysParams(256)
  SfcPhysParams(257) = SfcPhysParams(257)
  SfcPhysParams(258) = SfcPhysParams(258)
  SfcPhysParams(259) = SfcPhysParams(259)
  SfcPhysParams(260) = SfcPhysParams(260)
  SfcPhysParams(261) = SfcPhysParams(261)
  SfcPhysParams(262) = SfcPhysParams(262)
  SfcPhysParams(263) = SfcPhysParams(263)
  SfcPhysParams(264) = SfcPhysParams(264)
  SfcPhysParams(265) = SfcPhysParams(265)
  SfcPhysParams(266) = SfcPhysParams(266)
  SfcPhysParams(267) = SfcPhysParams(267)
  SfcPhysParams(268) = SfcPhysParams(268)
  SfcPhysParams(269) = SfcPhysParams(269)
  SfcPhysParams(270) = SfcPhysParams(270)
  SfcPhysParams(271) = SfcPhysParams(271)
  SfcPhysParams(272) = SfcPhysParams(272)
  SfcPhysParams(273) = SfcPhysParams(273)
  SfcPhysParams(274) = SfcPhysParams(274)
  SfcPhysParams(275) = SfcPhysParams(275)
  SfcPhysParams(276) = SfcPhysParams(276)
  SfcPhysParams(277) = SfcPhysParams(277)
  SfcPhysParams(278) = SfcPhysParams(278)
  SfcPhysParams(279) = SfcPhysParams(279)
  SfcPhysParams(280) = SfcPhysParams(280)
  SfcPhysParams(281) = SfcPhysParams(281)
  SfcPhysParams(282) = SfcPhysParams(282)
  SfcPhysParams(283) = SfcPhysParams(283)
  SfcPhysParams(284) = SfcPhysParams(284)
  SfcPhysParams(285) = SfcPhysParams(285)
  SfcPhysParams(286) = SfcPhysParams(286)
  SfcPhysParams(287) = SfcPhysParams(287)
  SfcPhysParams(288) = SfcPhysParams(288)
  SfcPhysParams(289) = SfcPhysParams(289)
  SfcPhysParams(290) = SfcPhysParams(290)
  SfcPhysParams(291) = SfcPhysParams(291)
  SfcPhysParams(292) = SfcPhysParams(292)
  SfcPhysParams(293) = SfcPhysParams(293)
  SfcPhysParams(294) = SfcPhysParams(294)
  SfcPhysParams(295) = SfcPhysParams(295)
  SfcPhysParams(296) = SfcPhysParams(296)
  SfcPhysParams(297) = SfcPhysParams(297)
  SfcPhysParams(298) = SfcPhysParams(298)
  SfcPhysParams(299) = SfcPhysParams(299)
  SfcPhysParams(300) = SfcPhysParams(300)
  SfcPhysParams(301) = SfcPhysParams(301)
  SfcPhysParams(302) = SfcPhysParams(302)
  SfcPhysParams(303) = SfcPhysParams(303)
  SfcPhysParams(304) = SfcPhysParams(304)
  SfcPhysParams(305) = SfcPhysParams(305)
  SfcPhysParams(306) = SfcPhysParams(306)
  SfcPhysParams(307) = SfcPhysParams(307)
  SfcPhysParams(308) = SfcPhysParams(308)
  SfcPhysParams(309) = SfcPhysParams(309)
  SfcPhysParams(310) = SfcPhysParams(310)
  SfcPhysParams(311) = SfcPhysParams(311)
  SfcPhysParams(312) = SfcPhysParams(312)
  SfcPhysParams(313) = SfcPhysParams(313)
  SfcPhysParams(314) = SfcPhysParams(314)
  SfcPhysParams(315) = SfcPhysParams(315)
  SfcPhysParams(316) = SfcPhysParams(316)
  SfcPhysParams(317) = SfcPhysParams(317)
  SfcPhysParams(318) = SfcPhysParams(318)
  SfcPhysParams(319) = SfcPhysParams(319)
  SfcPhysParams(320) = SfcPhysParams(320)
  SfcPhysParams(321) = SfcPhysParams(321)
  SfcPhysParams(322) = SfcPhysParams(322)
  SfcPhysParams(323) = SfcPhysParams(323)
  SfcPhysParams(324) = SfcPhysParams(324)
  SfcPhysParams(325) = SfcPhysParams(325)
  SfcPhysParams(326) = SfcPhysParams(326)
  SfcPhysParams(327) = SfcPhysParams(327)
  SfcPhysParams(328) = SfcPhysParams(328)
  SfcPhysParams(329) = SfcPhysParams(329)
  SfcPhysParams(330) = SfcPhysParams(330)
  SfcPhysParams(331) = SfcPhysParams(331)
  SfcPhysParams(332) = SfcPhysParams(332)
  SfcPhysParams(333) = SfcPhysParams(333)
  SfcPhysParams(334) = SfcPhysParams(334)
  SfcPhysParams(335) = SfcPhysParams(335)
  SfcPhysParams(336) = SfcPhysParams(336)
  SfcPhysParams(337) = SfcPhysParams(337)
  SfcPhysParams(338) = SfcPhysParams(338)
  SfcPhysParams(339) = SfcPhysParams(339)
  SfcPhysParams(340) = SfcPhysParams(340)
  SfcPhysParams(341) = SfcPhysParams(341)
  SfcPhysParams(342) = SfcPhysParams(342)
  SfcPhysParams(343) = SfcPhysParams(343)
  SfcPhysParams(344) = SfcPhysParams(344)
  SfcPhysParams(345) = SfcPhysParams(345)
  SfcPhysParams(346) = SfcPhysParams(346)
  SfcPhysParams(347) = SfcPhysParams(347)
  SfcPhysParams(348) = SfcPhysParams(348)
  SfcPhysParams(349) = SfcPhysParams(349)
  SfcPhysParams(350) = SfcPhysParams(350)
  SfcPhysParams(351) = SfcPhysParams(351)
  SfcPhysParams(352) = SfcPhysParams(352)
  SfcPhysParams(353) = SfcPhysParams(353)
  SfcPhysParams(354) = SfcPhysParams(354)
  SfcPhysParams(355) = SfcPhysParams(355)
  SfcPhysParams(356) = SfcPhysParams(356)
  SfcPhysParams(357) = SfcPhysParams(357)
  SfcPhysParams(358) = SfcPhysParams(358)
  SfcPhysParams(359) = SfcPhysParams(359)
  SfcPhysParams(360) = SfcPhysParams(360)
  SfcPhysParams(361) = SfcPhysParams(361)
  SfcPhysParams(362) = SfcPhysParams(362)
  SfcPhysParams(363) = SfcPhysParams(363)
  SfcPhysParams(364) = SfcPhysParams(364)
  SfcPhysParams(365) = SfcPhysParams(365)
  SfcPhysParams(366) = SfcPhysParams(366)
  SfcPhysParams(367) = SfcPhysParams(367)
  SfcPhysParams(368) = SfcPhysParams(368)
  SfcPhysParams(369) = SfcPhysParams(369)
  SfcPhysParams(370) = SfcPhysParams(370)
  SfcPhysParams(371) = SfcPhysParams(371)
  SfcPhysParams(372) = SfcPhysParams(372)
  SfcPhysParams(373) = SfcPhysParams(373)
  SfcPhysParams(374) = SfcPhysParams(374)
  SfcPhysParams(375) = SfcPhysParams(375)
  SfcPhysParams(376) = SfcPhysParams(376)
  SfcPhysParams(377) = SfcPhysParams(377)
  SfcPhysParams(378) = SfcPhysParams(378)
  SfcPhysParams(379) = SfcPhysParams(379)
  SfcPhysParams(380) = SfcPhysParams(380)
  SfcPhysParams(381) = SfcPhysParams(381)
  SfcPhysParams(382) = SfcPhysParams(382)
  SfcPhysParams(383) = SfcPhysParams(383)
  SfcPhysParams(384) = SfcPhysParams(384)
  SfcPhysParams(385) = SfcPhysParams(385)
  SfcPhysParams(386) = SfcPhysParams(386)
  SfcPhysParams(387) = SfcPhysParams(387)
  SfcPhysParams(388) = SfcPhysParams(388)
```